

# Impact-P 102D



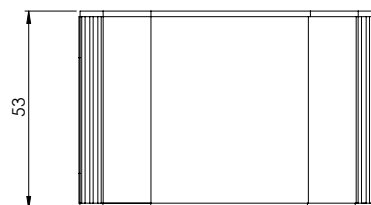
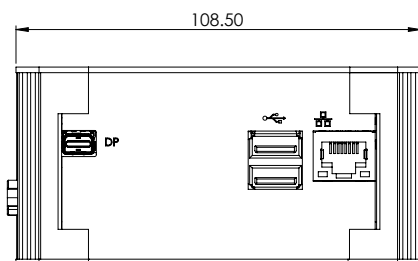
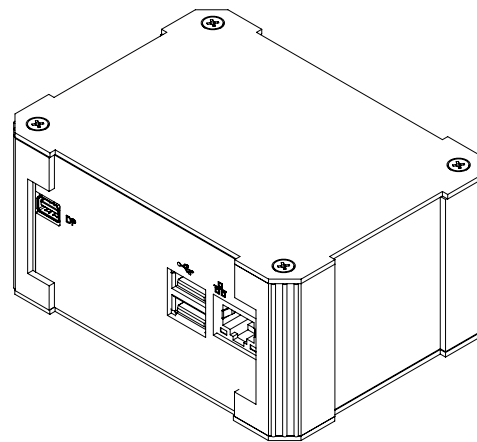
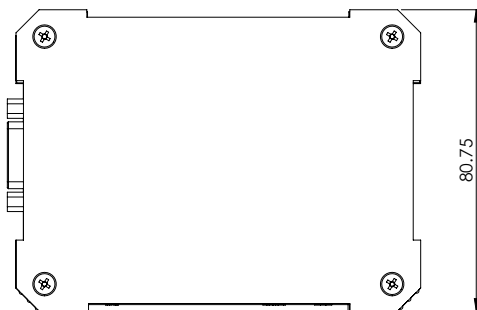
## Features

The IoT Edge ready Impact-P 102D is an ultra-compact, DIN Rail mountable, low power embedded system, utilising the superb Intel Atom® X5-E3930 processing technology.

Key features:

- 3 year warranty
- 15 year life cycle
- DIN Rail Mount

## Dimensions



# Impact-P 102D

## Specifications

The information is believed to be accurate. However Amplicon Liveline Limited accepts no responsibility for any problems caused by errors and omissions. Specifications are subject to change without notice.

Hardware Specification	CPU: Intel Atom® X5-E3930 Main memory: DDR4 2GB ( up to 4GB) LAN: 1 x Intel® I211AT PCIe (10/100/1000Mbps)	Environmental Storage	Temperature: -40°C to 85°C Humidity: 5% to 95% RH Non-condensing
BIOS	Insyde SPI 128Mbit (supports UEFI boot only)	Environmental Operation	Acoustic noise: Near silent operation Operating Temperature: -20°C to 70°C Humidity: 5 to 95% non-condensing MTBF: TBD
Display	1x Mini DP++: resolution up to 4096x2160 @ 60Hz	Certifications	CE / UKCA
Storage	1 x 32GB eMMC (16GB/64GB options)		
System Expansion	1 x Full-size Mini PCIe (PCIe/USB 2.0, optional USB 3.1 Gen1/USB 2.0)		
Supported O/S	Windows 10 IoT Enterprise (64-bit), Linux		
TPM	TPM 2.0		
External Interfaces	2x USB 3.1 Gen1 1x RJ45 LAN 1x RS-232/422/485 port 1x Mini DP++		
Main board power options	48VDC PoE, PoE LAN		
Mechanical	Design: Rugged compact embedded design Cooling: Fanless design Construction: Aluminium with carbon fibre composite Colour: Black Dimensions: 108.50mm x 80.75 x 53mm (W x H x D) Gross Weight: 300g		

## I/O plate

